

Lower Naches Trail

Distance: 2.2 Miles

Running Time: Approx. 45min to 1 hour

Difficulty: More to Most Difficult



Roads Paved/Gravel



4x4 Trail: Easy



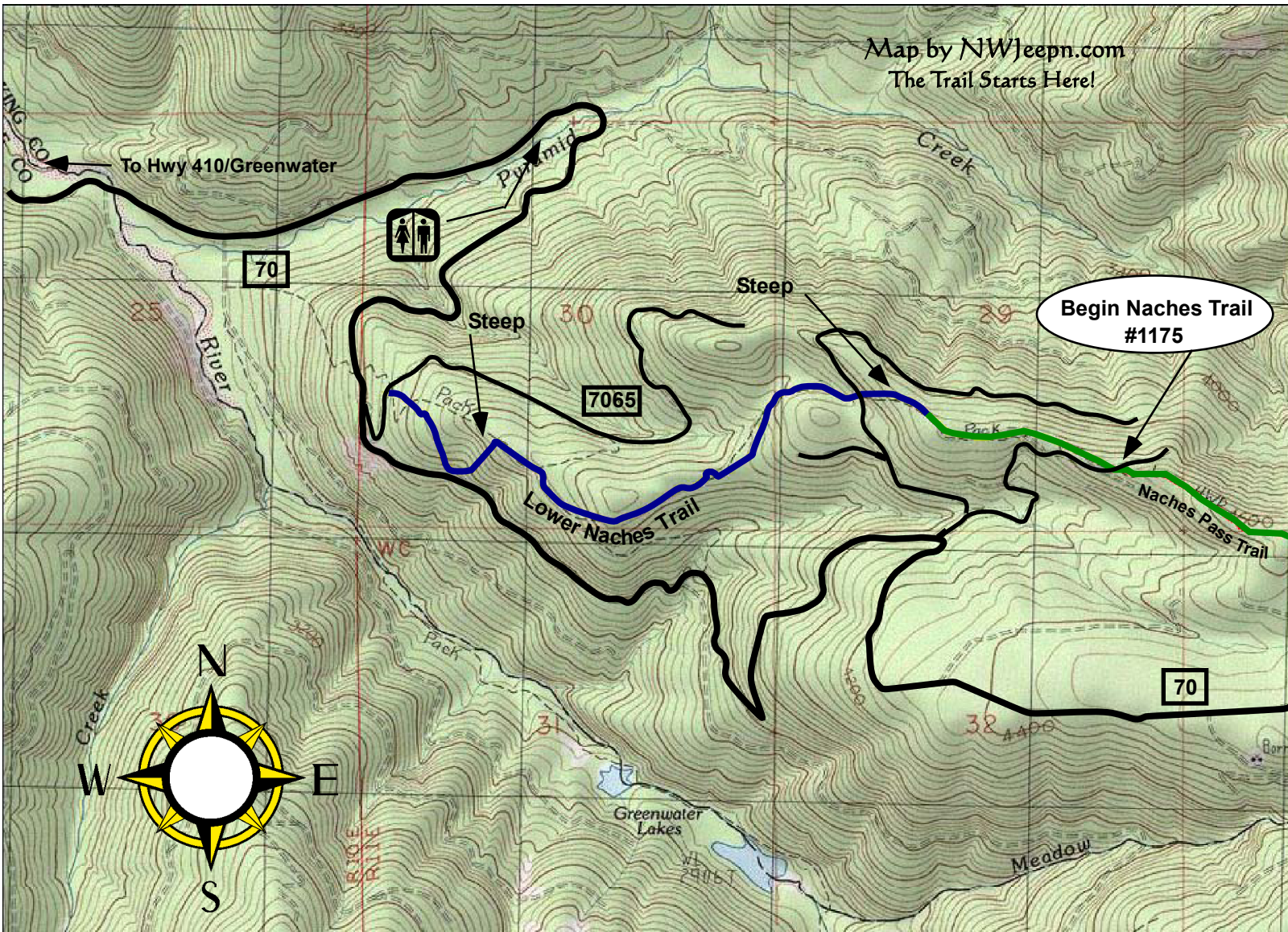
4x4 Trail: More Difficult



Restrooms



FS Road Number



Although we don't consider this to be part of the Naches Pass Trail it is a great trail to run for those looking for a little more challenge than the Naches trail offers. This is a more difficult trail, just over 2 miles in length, with lots of hill climbs/descents. With some rain this trail would become most difficult and may require the use of a winch at times. Running uphill this trail joins the Naches Pass Trail #1175 on top of the ridge line.

Getting there: Take Hwy 410 east to Greenwater. Continue past Greenwater for about a mile. Turn left onto forest service road 70 (FS-70). Continue east on FS70 and do not turn off of the main road. Watch for logging trucks! At approximately 6.77 miles from hwy 410 on FS70, bear to the left on to FS7065. Follow FS7065 around a sharp left turn and watch for the trailhead on the right.